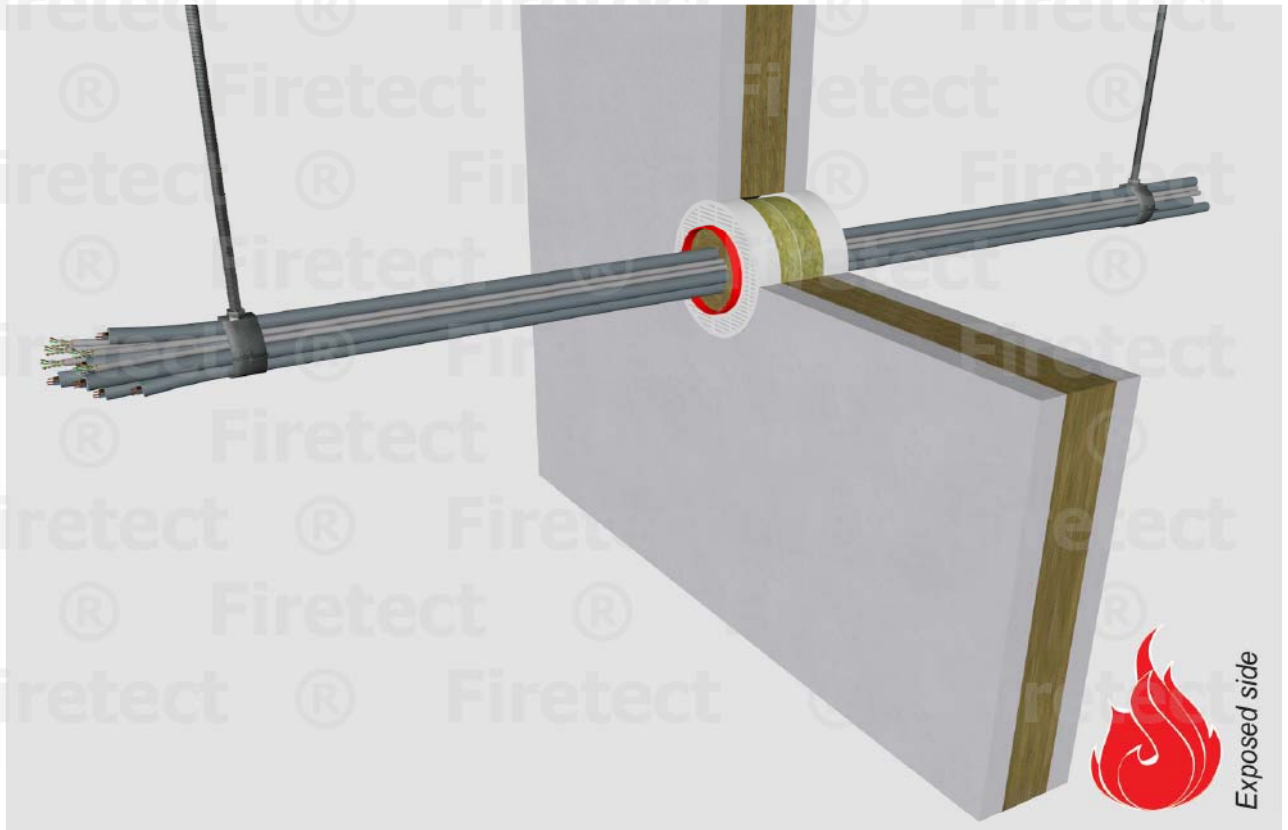


tested property
test method
service no.

fire resistance
EN 1366-3
21-14



cables

Cable transit

bundle dØ (mm)	cable specs ¹⁾ group	conduit	assembly Cu (mm ²) max.	EI	constructive element ²⁾	Firetect cable box Ø in mm	application 1 or 2 sides	finish required	max. opening in construction
Ø50	group 1 - small sheathed ≤ Ø 21mm	-	1124	EI 60	flexible walls ≥ 100 mm	Ø 50 mm	centrally	*	Ø76
			817	EI 120	flexible walls ≥ 100 mm	Ø 50 mm	centrally	*	Ø90
			1124	EI 120	rigid walls ≥ 150 mm	Ø 50 mm	centrally	*	Ø71
			1124	EI 120	rigid floors ≥ 150 mm	Ø 50 mm	centrally	*	Ø71
Ø50	group 4 - data + fibre optic	-	61	EI 120	flexible walls ≥ 100 mm	Ø 50 mm	centrally	*	Ø90
Ø90	group 1 - small sheathed ≤ Ø 21mm	-	2729	EI 60	flexible walls ≥ 100 mm	Ø 90 mm	centrally	*	Ø110
			1855	EI 90	flexible walls ≥ 100 mm	Ø 90 mm	centrally	*	Ø140
			2248	EI 120	rigid floors ≥ 150 mm	Ø 90 mm	centrally	*	Ø110
Ø90	group 4 - data + fibre optic	-	365	EI 90	flexible walls ≥ 100 mm	Ø 90 mm	centrally	*	Ø140

in PA board 2S 50 mm

* mount transit with Acrylic sealant

+ put loose rock wool ≥ 100kg/m³ in transit on 2 sides

¹⁾ Penetration services must be supported; support distance ≤ 500mm (wall) or ≤ 400mm (floor).

²⁾ Constructive element must be classified acc. EN 13501-2 for the required fire resistance period. EI for flexible walls ≥ 100mm is also applicable for rigid walls ≥ 100mm!