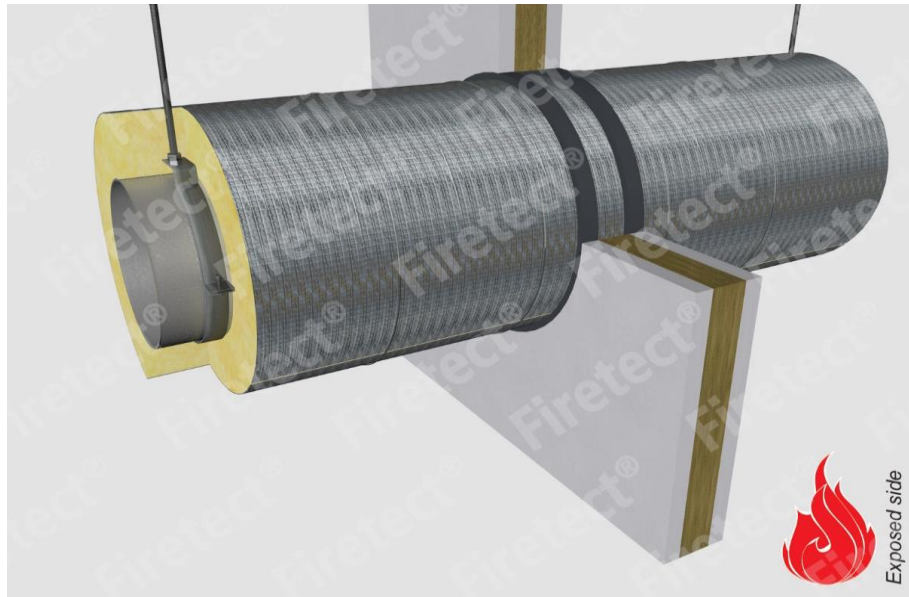


tested property
test method
service no.

fire resistance
EN 1366-3
21-1



steel pipes

Graphite sealant

service type ¹⁾ pipe insulation ²⁾ EI constructive element ³⁾ Firetect joint seal application backing max. opening pipe end max. angle
 dØ (mm) s1 (mm) min. 75 kg/m³ eg Climpipe, Rockwool or U Protect Pipe Section Alu2
 width depth 1 or 2 sides required in construction configuration

dØ (mm)	s1 (mm)	pipe insulation	EI	constructive element	Firetect joint seal		application	backing required	max. opening in construction	pipe end configuration	max. angle	
					width	depth						
Ø15	1,0	glass / rock wool 20mm	1200 CS + CI	EI 120	flexible walls ≥ 100 mm	10 mm	25 mm	2 sides	-	75 mm	CU + UIC + CIC	perpendicular + all angles between 90° and 45°
		20mm	1200 CS + CI	EI 240	rigid walls ≥ 150 mm	15 mm	25 mm	2 sides	-	85 mm	UIC + C/C	
	30mm	1200 CS + CI	EI 120	flexible walls ≥ 100 mm	10 mm	25 mm	2 sides	-	95 mm	CU + UIC + CIC		
	30mm	1200 CS + CI	EI 240	rigid walls ≥ 150 mm	15 mm	25 mm	2 sides	-	105 mm	UIC + C/C		
	40mm	1200 CS + CI	EI 120	flexible walls ≥ 100 mm	10 mm	25 mm	2 sides	-	115 mm	CU + UIC + CIC		
	40mm	1200 CS + CI	EI 240	rigid walls ≥ 150 mm	15 mm	25 mm	2 sides	-	125 mm	UIC + C/C		
	50mm	1200 CS + CI	EI 120	flexible walls ≥ 100 mm	10 mm	25 mm	2 sides	-	135 mm	CU + UIC + CIC		
	50mm	1200 CS + CI	EI 240	rigid walls ≥ 150 mm	15 mm	25 mm	2 sides	-	145 mm	UIC + C/C		
Ø42.2	3,25	20mm glass / rock wool	1200 CS + CI	EI 120	flexible walls ≥ 100 mm	10 mm	25 mm	2 sides	-	102 mm	CU + UIC + CIC	perpendicular + all angles between 90° and 45°
		20mm	1200 CS + CI	EI 90	rigid walls ≥ 150 mm	15 mm	25 mm	2 sides	-	112 mm	CU + UIC + CIC	
	30mm	1200 CS + CI	EI 120	flexible walls ≥ 100 mm	10 mm	25 mm	2 sides	-	122 mm	CU + UIC + CIC		
	30mm	1200 CS + CI	EI 90	rigid walls ≥ 150 mm	15 mm	25 mm	2 sides	-	132 mm	CU + UIC + CIC		
	40mm	1200 CS + CI	EI 120	flexible walls ≥ 100 mm	10 mm	25 mm	2 sides	-	142 mm	CU + UIC + CIC		
	40mm	1200 CS + CI	EI 90	rigid walls ≥ 150 mm	15 mm	25 mm	2 sides	-	152 mm	CU + UIC + CIC		
	50mm	1200 CS + CI	EI 120	flexible walls ≥ 100 mm	10 mm	25 mm	2 sides	-	162 mm	CU + UIC + CIC		
	50mm	1200 CS + CI	EI 90	rigid walls ≥ 150 mm	15 mm	25 mm	2 sides	-	172 mm	CU + UIC + CIC		
Ø76	2,1	glass / rock wool 20mm	1200 CS + CI	EI 90	flexible walls ≥ 100 mm	10 mm	25 mm	2 sides	-	136 mm	CU + UIC + CIC	perpendicular + all angles between 90° and 45°
		20mm	1200 CS + CI	EI 90	rigid walls ≥ 150 mm	15 mm	25 mm	2 sides	-	150 mm	UIC + C/C	
	30mm	1200 CS + CI	EI 90	flexible walls ≥ 100 mm	10 mm	25 mm	2 sides	-	156 mm	CU + UIC + CIC		
	30mm	1200 CS + CI	EI 90	rigid walls ≥ 150 mm	15 mm	25 mm	2 sides	-	166 mm	UIC + C/C		
	40mm	1200 CS + CI	EI 90	flexible walls ≥ 100 mm	10 mm	25 mm	2 sides	-	176 mm	CU + UIC + CIC		
	40mm	1200 CS + CI	EI 90	rigid walls ≥ 150 mm	15 mm	25 mm	2 sides	-	186 mm	UIC + C/C		
	50mm	1200 CS + CI	EI 90	flexible walls ≥ 100 mm	10 mm	25 mm	2 sides	-	196 mm	CU + UIC + CIC		
	50mm	1200 CS + CI	EI 90	rigid walls ≥ 150 mm	15 mm	25 mm	2 sides	-	206 mm	UIC + C/C		
max.	Ø219,1	4,5 glass / rock wool 20mm	1200 CS + CI	EI 60	flexible walls ≥ 100 mm	10 mm	25 mm	2 sides	-	279 mm	CU + UIC + CIC	perpendicular + all angles between 90° and 45°
		30mm	1200 CS + CI	EI 60	flexible walls ≥ 100 mm	10 mm	25 mm	2 sides	-	299 mm	CU + UIC + CIC	
	40mm	1200 CS + CI	EI 60	flexible walls ≥ 100 mm	10 mm	25 mm	2 sides	-	319 mm	CU + UIC + CIC		
	50mm	1200 CS + CI	EI 120	flexible walls ≥ 100 mm	10 mm	25 mm	2 sides	-	339 mm	CU + UIC + CIC		
	60mm	1200 CS + CI	EI 120	flexible walls ≥ 100 mm	10 mm	25 mm	2 sides	-	359 mm	CU + UIC + CIC		
	80mm	1200 CS + CI	EI 120	flexible walls ≥ 100 mm	10 mm	25 mm	2 sides	-	399 mm	CU + UIC + CIC		

¹⁾ Penetration services must be supported; support distance ≤ 500mm.
²⁾ Pipe insulation must be fastened individually (not wrapped) with steel wire: at max. 50mm + 300mm from constructive element.
³⁾ Constructive element must be classified acc. EN 13501-2 for the required fire resistance period. EI for flexible walls ≥100mm is also applicable for rigid walls ≥100mm!