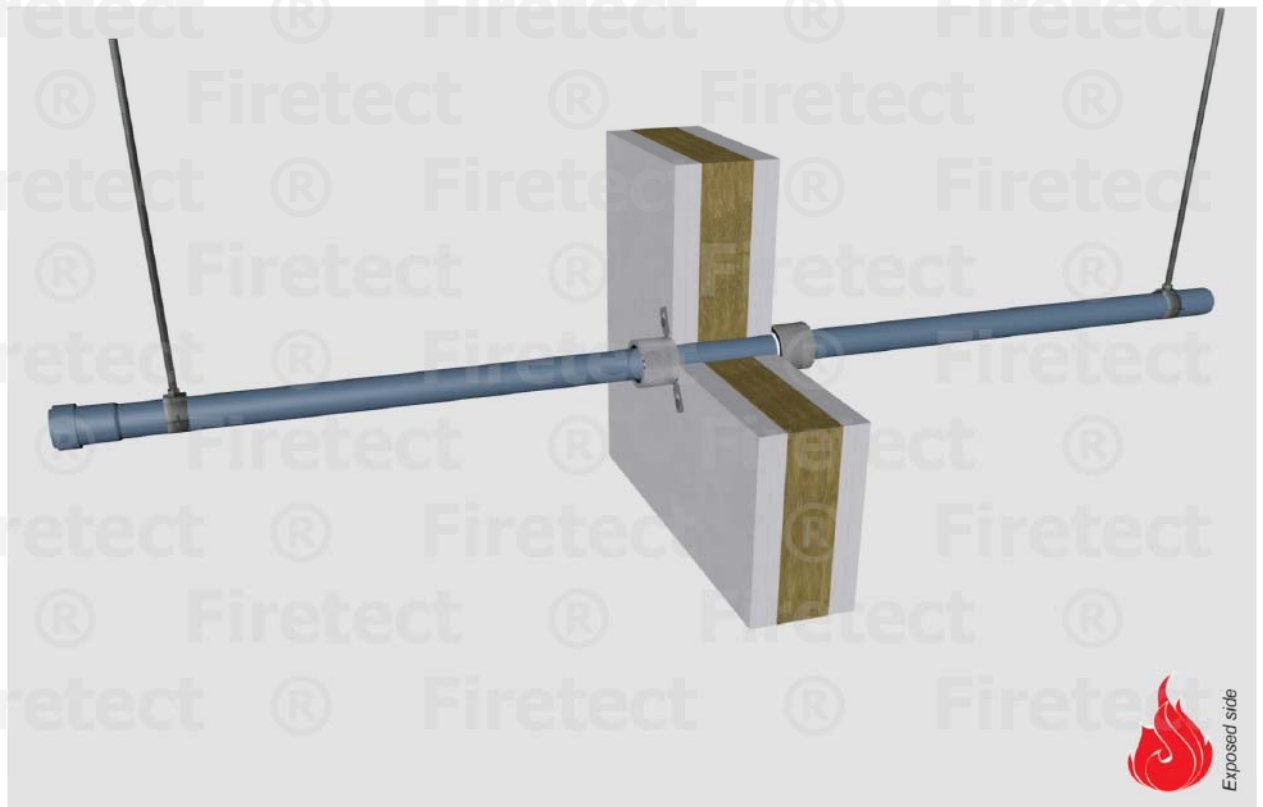


tested property  
test method  
service no.

fire resistance  
EN 1366-3  
19-62



## PP-MD pipes

FMU collar	
------------	--

service type dØ (mm) s1 (mm)	pipe socket	EI	constructive element <sup>2)</sup>	Firetect pipe collar		application 1 or 2 sides	finish required	max. opening in construction	pipe end configuration	max. angle
				width	depth					
Ø32 1,8	-	EI 120	flexible walls ≥ 100 mm	Ø40	2 sides	*	32 mm	U/C + C/C	perpendicular + all angles between 90° and 45°	
	-	EI 240	rigid walls ≥ 150 mm	Ø40	2 sides	*	32mm	U/C + C/C		
Ø50 2,0	-	EI 120	flexible walls ≥ 100 mm	Ø50	2 sides	*	50 mm	U/C + C/C		
	-	EI 180	rigid walls ≥ 150 mm	Ø50	2 sides	*	50 mm	U/C + C/C		
Ø75 2,6	-	EI 120	flexible walls ≥ 100 mm	Ø75	2 sides	*	75 mm	U/C + C/C		
	-	EI 240	rigid walls ≥ 150 mm	Ø75	2 sides	*	75 mm	U/C + C/C		
Ø110 3,8	-	EI 120	flexible walls ≥ 100 mm	Ø110	2 sides	*	110 mm	U/C + C/C		
	socket on 2 sides	CI 60	flexible walls ≥ 100 mm	Ø140	2 sides	*	135 mm	U/C + C/C		
Ø160 5,4	-	EI 60	flexible walls ≥ 100 mm	Ø160	2 sides	*	160 mm	U/C + C/C		
	socket on 2 sides	EI 60	flexible walls ≥ 100 mm	Ø200	2 sides	*	185 mm	U/C + C/C		

\* smoke seal Acrylic on 2 sides

<sup>1)</sup> Penetration services must be supported; support distance ≤ 500mm.

<sup>2)</sup> Constructive element must be classified acc. EN 13501-2 for the required fire resistance period. EI for flexible walls ≥ 100mm is also applicable for rigid walls ≥ 100mm!