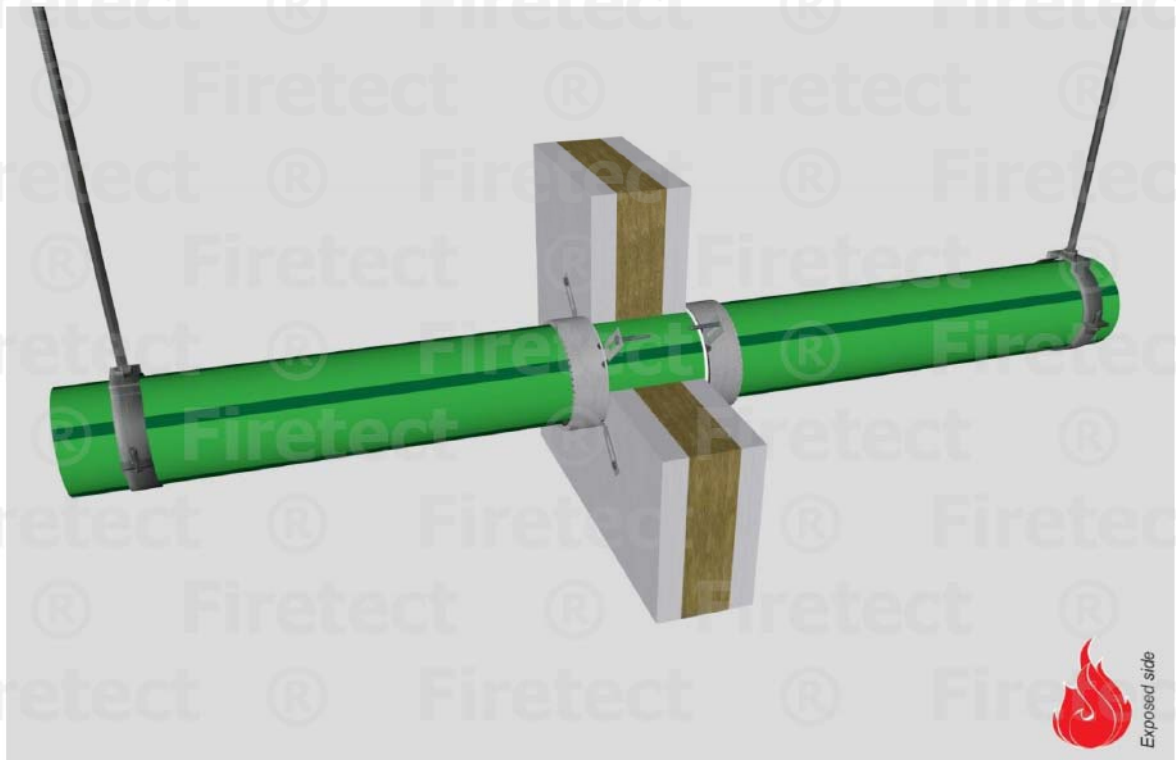


tested property
test method
service no.

fire resistance
EN 1366-3
19-12



PP-R pipes

FMU collar

service type dØ (mm) s1 (mm)	EI	constructive element ²⁾	Firetect pipe collar		application 1 or 2 sides	finish required	max. opening in construction	pipe end configuration	max. angle
			width	depth					
Ø40 max. 5,5	EI 120	flexible walls ≥ 100 mm rigid walls ≥ 150 mm	Ø40	2 sides	*	40 mm	U/C + C/C	perpendicular + all angles between 90° and 45°	
			Ø40	2 sides	*	40 mm	U/C + C/C		
	EI 60	flexible walls ≥ 100 mm rigid walls ≥ 150 mm	Ø40	2 sides	*	40 mm	U/C + C/C		
			Ø40	2 sides	*	40 mm	U/C + C/C		
Ø63 max. 8,6	EI 90	flexible walls ≥ 100 mm rigid walls ≥ 150 mm	Ø63	2 sides	*	63 mm	U/C + C/C	perpendicular + all angles between 90° and 45°	
			Ø63	2 sides	*	63 mm	U/C + C/C		
	EI 90	flexible walls ≥ 100 mm rigid walls ≥ 150 mm	Ø63	2 sides	*	63 mm	U/C + C/C		
			Ø40	2 sides	*	63 mm	U/C + C/C		
Ø75 max. 10,3	EI 90	flexible walls ≥ 100 mm rigid walls ≥ 150 mm	Ø75	2 sides	*	75 mm	U/C + C/C	perpendicular + all angles between 90° and 45°	
			Ø63	2 sides	*	75 mm	U/C + C/C		
	EI 90	flexible walls ≥ 100 mm rigid walls ≥ 150 mm	Ø75	2 sides	*	75 mm	U/C + C/C		
			Ø63	2 sides	*	75 mm	U/C + C/C		
max.									
Ø110 max. 15,1	EI 60	flexible walls ≥ 100 mm	Ø110	2 sides	*	110 mm	U/C + C/C	perpendicular + all angles between 90° and 45°	
			Ø110	2 sides	*	110 mm	U/C + C/C		

* smoke seal Acrylic on 2 sides

¹⁾ Penetration services must be supported; support distance ≤ 500mm.

²⁾ Constructive element must be classified acc. EN 13501-2 for the required fire resistance period. EI for flexible walls ≥ 100mm is also applicable for rigid walls ≥ 100mm!