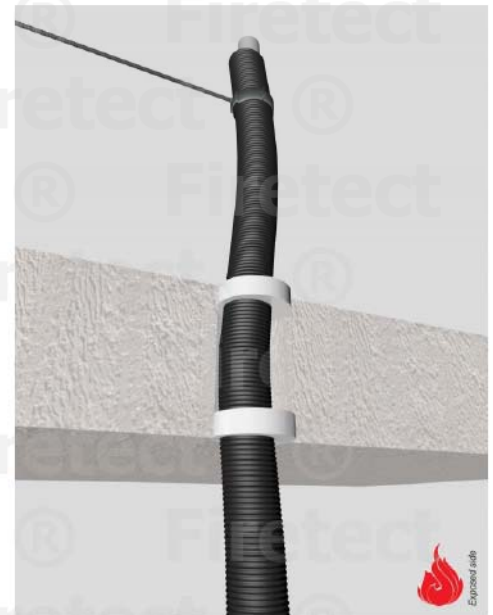


tested property  
test method  
service no.

fire resistance  
EN 1366-3  
15-40



## PE-Xa pipes

### Acrylic sealant

service type		pipe insulation	EI	constructive element <sup>2)</sup>	Firetect joint seal		application	backing required	max. opening in construction	pipe end configuration	max. angle
dØ (mm)	s1 (mm)				width	depth					
Ø15/28	2,5	-	EI 90	flexible walls ≥ 100 mm	10 mm	25 mm	2 sides	-	48 mm	U/C + C/C	perpendicular + all angles between 90° and 45°
		-	EI 240	rigid walls ≥ 150 mm	15 mm	25 mm	2 sides	-	58 mm	U/C + C/C	
		-	EI 240	rigid floors ≥ 150 mm	15 mm	25 mm	2 sides	-	58 mm	U/C + C/C	
Ø16/25	2,2	-	EI 120	flexible walls ≥ 100 mm	10 mm	25 mm	2 sides	-	45 mm	U/C + C/C	perpendicular + all angles between 90° and 45°
		-	EI 240	rigid walls ≥ 150 mm	15 mm	25 mm	2 sides	-	55 mm	U/C + C/C	
		-	EI 240	rigid floors ≥ 150 mm	15 mm	25 mm	2 sides	-	55 mm	U/C + C/C	
Ø32/54	4,4	-	EI 60	flexible walls ≥ 100 mm	10 mm	25 mm	2 sides	-	74 mm	U/C + C/C	perpendicular + all angles between 90° and 45°
		-	EI 180	rigid walls ≥ 150 mm	15 mm	25 mm	2 sides	-	84 mm	U/C + C/C	
		-	EI 180	rigid floors ≥ 150 mm	15 mm	25 mm	2 sides	-	84 mm	U/C + C/C	

'Eccentric to zero' position in opening is allowed.

<sup>1)</sup> Penetration services must be supported; support distance ≤ 500mm (wall) or ≤ 400mm (floor).

<sup>2)</sup> Constructive element must be classified acc. EN 13501-2 for the required fire resistance period. EI for flexible walls ≥ 100mm is also applicable for rigid walls ≥ 100mm!