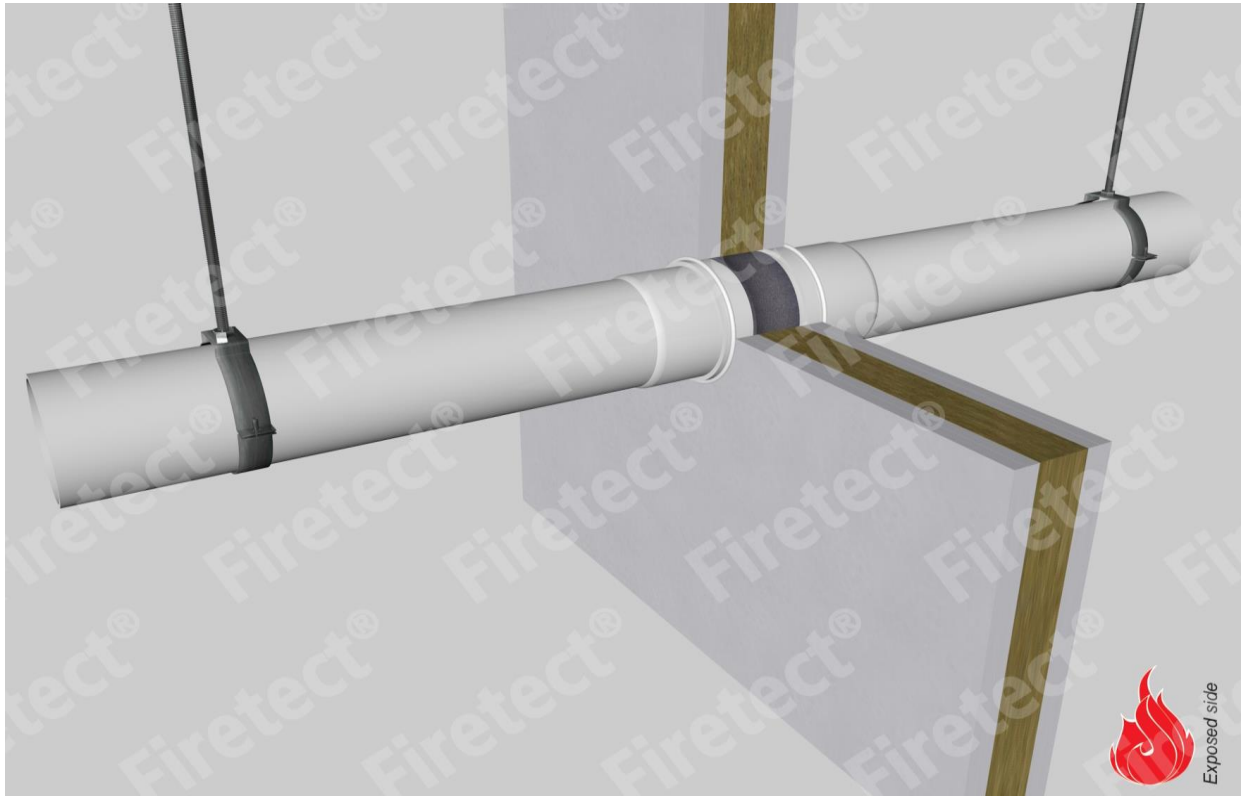


tested property
test method
service no.

fire resistance
EN 1366-3
15-38



PP-MD pipes

Wrap	
Firetect pipe wrap	
length	
TT x Ø x	no. of layers

service type	pipe socket	EI	constructive element ²⁾	Firetect pipe wrap	application	finish	max. opening	pipe end	max. angle
dØ (mm) s1 (mm)				length TT x Ø x no. of layers	1 or 2 sides	required	in construction	configuration	
Ø32 1,8	-	EI 120	flexible walls ≥ 100 mm	TT x Ø x 1	2 sides	*	36 mm	U/C + C/C	perpendicular + all angles between 90° and 45°
			rigid walls ≥ 150 mm	TT x Ø x 2	2 sides	*	44 mm	U/C + C/C	
Ø50 2,0	-	EI 120	flexible walls ≥ 100 mm	TT x Ø x 1	2 sides	*	55 mm	U/C + C/C	
			rigid walls ≥ 150 mm	TT x Ø x 1	2 sides	*	54 mm	U/C + C/C	
Ø75 2,6	-	EI 120	flexible walls ≥ 100 mm	TT x Ø x 1	2 sides	*	79 mm	U/C + C/C	
			rigid walls ≥ 150 mm	TT x Ø x 1	2 sides	*	79 mm	U/C + C/C	
Ø110 3,8	-	EI 120	flexible walls ≥ 100 mm	TT x Ø x 2	2 sides	*	118 mm	U/C + C/C	
			socket on 2 sides EI 90 flexible walls ≥ 100 mm	TT x Ø x 3	2 sides	*	160 mm	U/C + C/C	

* smoke seal Acrylic on 2 sides

¹⁾ Penetration services must be supported; support distance ≤ 500mm.

²⁾ Constructive element must be classified acc. EN 13501-2 for the required fire resistance period. EI for flexible walls ≥ 100mm is also applicable for rigid walls ≥ 100mm!