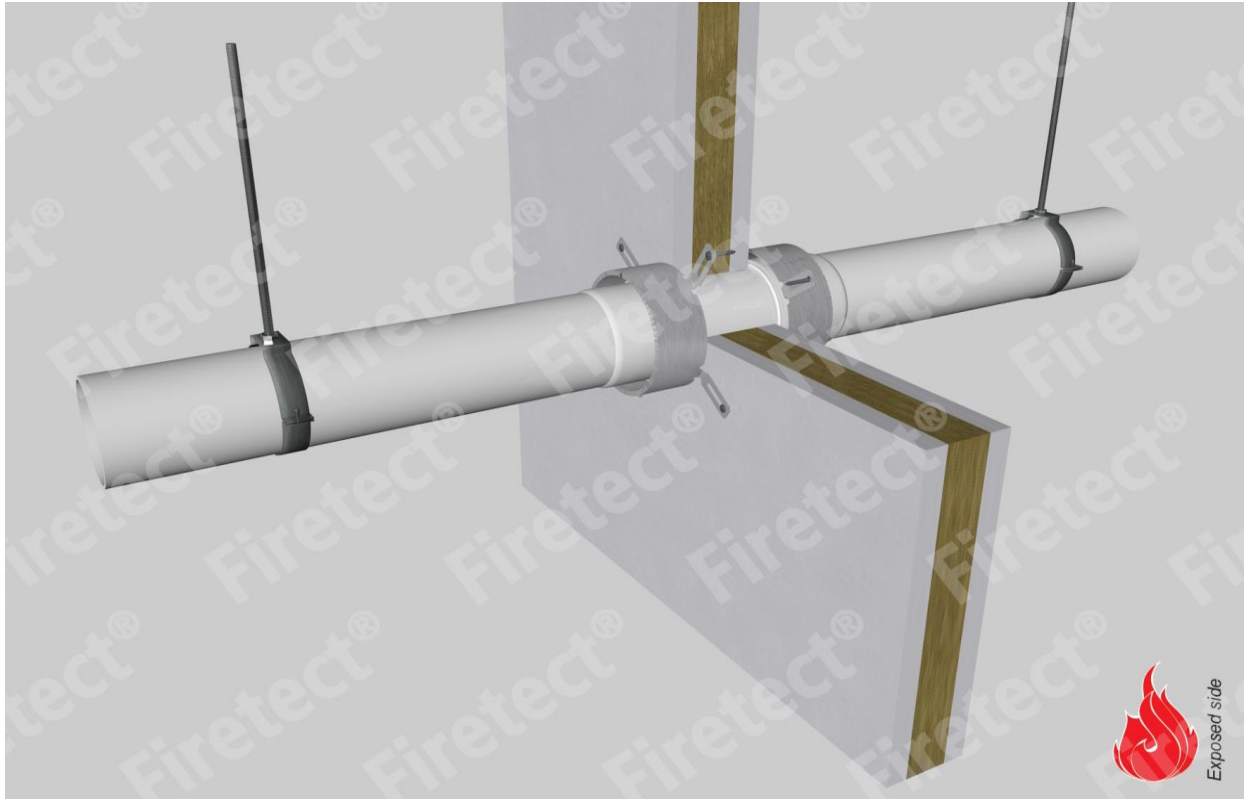



tested property
test method
service no.

fire resistance
EN 1366-3
15-37



PP-MD pipes

FMU collar

service type		pipe socket	EI 	constructive element ²⁾	Firetect pipe collar		application	finish required	max. opening in construction	pipe end configuration	max. angle
dØ (mm)	s1 (mm)				width	depth					
Ø32	1,8	-	EI 120	flexible walls ≥ 100 mm	Ø40		2 sides	*	32 mm	U/C + C/C	perpendicular + all angles between 90° and 45°
		-	EI 240	rigid walls ≥ 150 mm	Ø40		2 sides	*	32mm	U/C + C/C	
Ø50	2,0	-	EI 120	flexible walls ≥ 100 mm	Ø50		2 sides	*	50 mm	U/C + C/C	
		-	EI 180	rigid walls ≥ 150 mm	Ø50		2 sides	*	50 mm	U/C + C/C	
Ø75	2,6	-	EI 120	flexible walls ≥ 100 mm	Ø75		2 sides	*	75 mm	U/C + C/C	
		-	EI 240	rigid walls ≥ 150 mm	Ø75		2 sides	*	75 mm	U/C + C/C	
Ø110	3,8	-	EI 120	flexible walls ≥ 100 mm	Ø110		2 sides	*	110 mm	U/C + C/C	
		socket on 2 sides	EI 60	flexible walls ≥ 100 mm	Ø140		2 sides	*	135 mm	U/C + C/C	
Ø160	5,4	-	EI 60	flexible walls ≥ 100 mm	Ø160		2 sides	*	160 mm	U/C + C/C	
		socket on 2 sides	EI 60	flexible walls ≥ 100 mm	Ø200		2 sides	*	185 mm	U/C + C/C	

* smokesseal Acrylic on 2 sides

¹⁾ Penetration services must be supported; support distance ≤ 500mm.

²⁾ Constructive element must be classified acc. EN 13501-2 for the required fire resistance period. EI for flexible walls ≥100mm is also applicable for rigid walls ≥100mm!