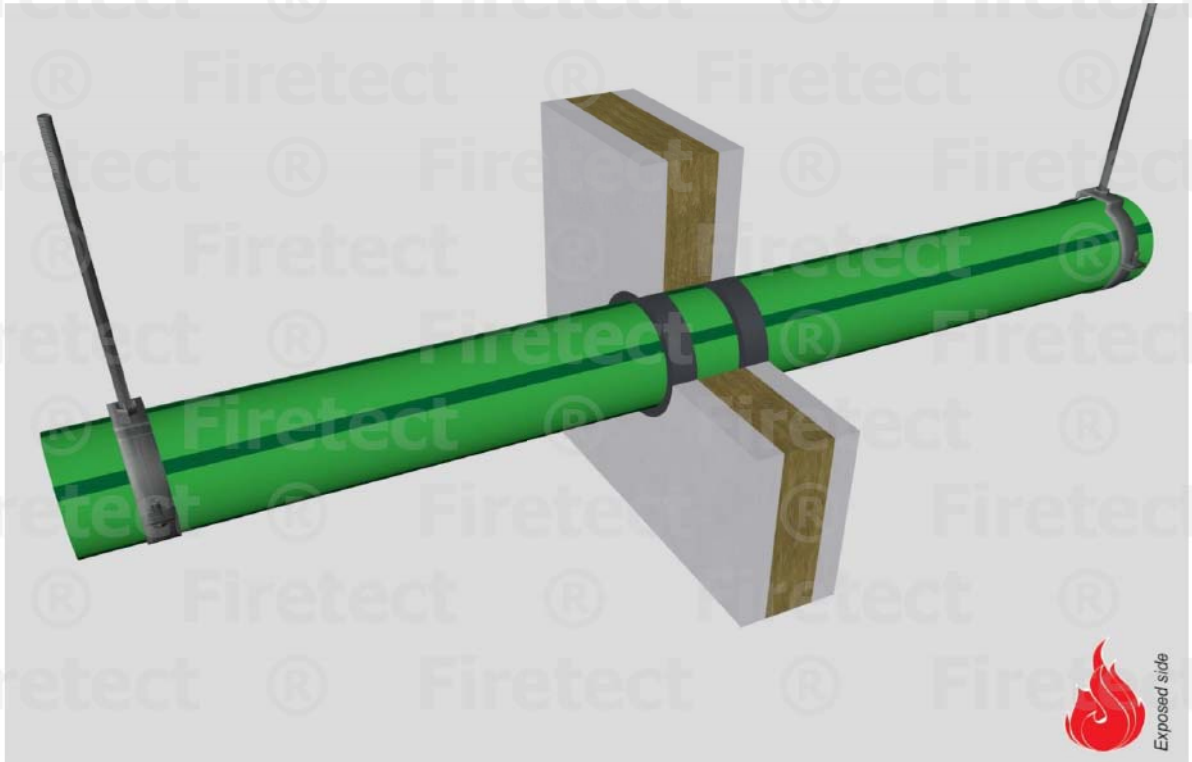


tested property
test method
service no.

fire resistance
EN 1366-3
15-28



PP-R pipes

Graphite sealant

service type dØ (mm) s1 (mm)	EI	constructive element ²⁾	Firetect joint seal		application 1 or 2 sides	backing required	max. opening in construction	pipe end configuration	max. angle
			width	depth					
Ø40 min. 3,7 max. 5,5	EI 120	flexible walls ≥ 100 mm	10 mm	40 mm	2 sides	-	60 mm	U/C + C/C	perpendicular + all angles between 90° and 45°
	EI 240	rigid walls ≥ 150 mm	15 mm	40 mm	2 sides	-	70 mm	U/C + C/C	
	EI 120	flexible walls ≥ 100 mm	10 mm	40 mm	2 sides	-	60 mm	U/C + C/C	
	EI 240	rigid walls ≥ 150 mm	15 mm	40 mm	2 sides	-	70 mm	U/C + C/C	
Ø63 min. 5,8 max. 8,6	EI 120	flexible walls ≥ 100 mm	10 mm	40 mm	2 sides	-	83 mm	U/C + C/C	perpendicular + all angles between 90° and 45°
	EI 240	rigid walls ≥ 150 mm	15 mm	40 mm	2 sides	-	93 mm	U/C + C/C	
	EI 120	flexible walls ≥ 100 mm	10 mm	40 mm	2 sides	-	83 mm	U/C + C/C	
	EI 180	rigid walls ≥ 150 mm	15 mm	40 mm	2 sides	-	93 mm	U/C + C/C	
Ø75 min. 6,8 max. 10,3	EI 120	flexible walls ≥ 100 mm	10 mm	40 mm	2 sides	-	95 mm	U/C + C/C	perpendicular + all angles between 90° and 45°
	EI 240	rigid walls ≥ 150 mm	15 mm	40 mm	2 sides	-	105 mm	U/C + C/C	
	EI 120	flexible walls ≥ 100 mm	10 mm	40 mm	2 sides	-	95 mm	U/C + C/C	
	EI 180	rigid walls ≥ 150 mm	15 mm	40 mm	2 sides	-	105 mm	U/C + C/C	
max.									
Ø110 min. 10 max. 15,1	EI 120	flexible walls ≥ 100 mm	10 mm	40 mm	2 sides	-	130 mm	U/C + C/C	perpendicular + all angles between 90° and 45°
	EI 60	flexible walls ≥ 100 mm	10 mm	40 mm	2 sides	-	130 mm	U/C + C/C	

¹⁾ Penetration services must be supported; support distance ≤ 500mm.

²⁾ Constructive element must be classified acc. EN 13501-2 for the required fire resistance period. EI for flexible walls ≥100mm is also applicable for rigid walls ≥100mm!