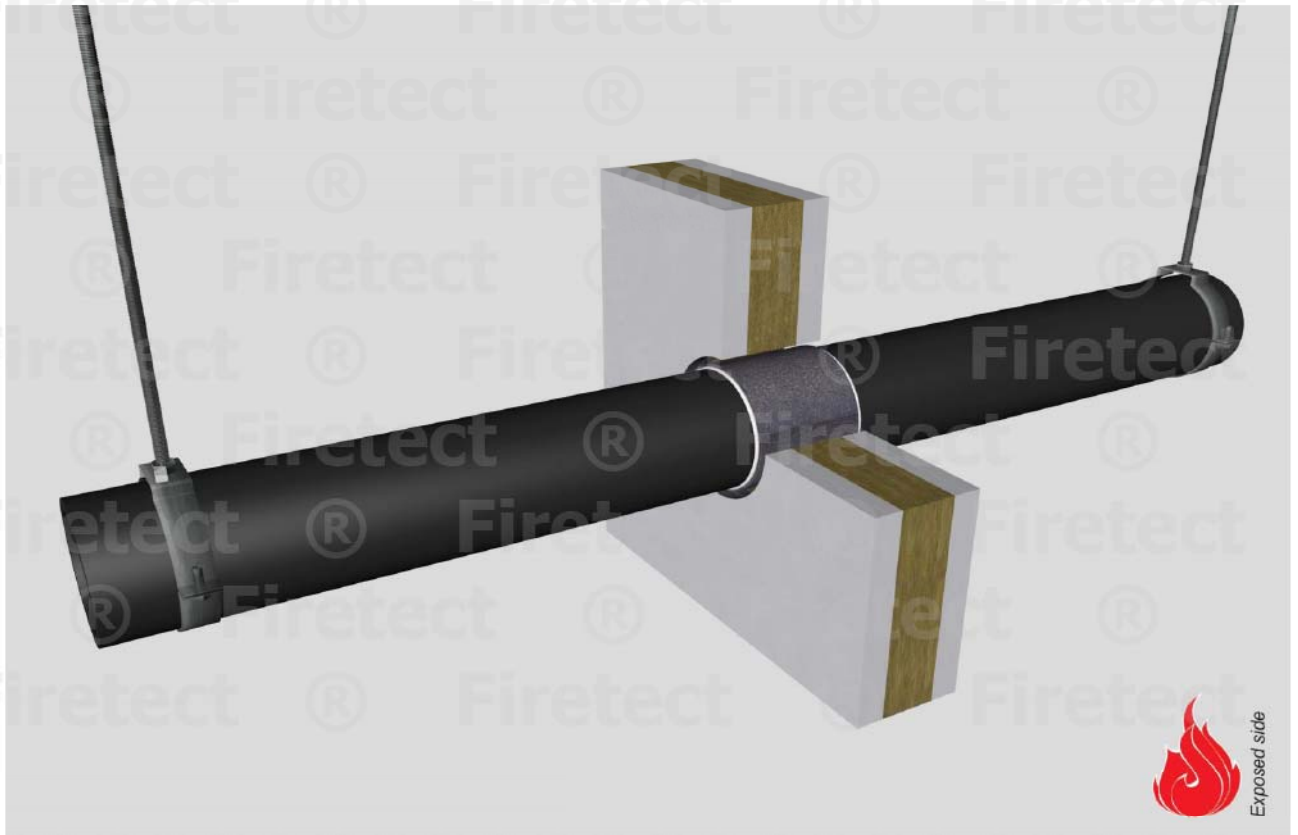


tested property
test method
service no.

fire resistance
EN 1366-3
Q286



PE + PP + PVC pipes

dØ (mm)	service type ¹⁾		EI	constructive element ²⁾	Wrap		application	finish required	max. opening in construction	pipe end configuration	max. angle
	s1 (mm)				Firetect pipe wrap length	no. of layers					
up to											
Ø110	PE	3,4 up to 10,0	EI 120	flexible walls ≥ 100 mm	π x Ø x	2	2 sides	*	132 mm	U/C + C/C	perpendicular + all angles between 90° and 45°
	PVC	2,7 up to 10,0									
	PP	2,7 up to 6,3									
Ø125	PE	3,9 up to 11,7	EI 60	flexible walls ≥ 100 mm	π x Ø x	2	2 sides	*	133 mm	U/C + C/C	perpendicular + all angles between 90° and 45°
	PVC	3,1 up to 11,7									
	PP	3,1 up to 1,1									
individual test results											
Ø90	PE	3,5 up to 8,2	EI 120	rigid walls ≥ 100 mm in FR mortar	π x Ø x	1	2 sides	-	200 x 1000 mm	U/C + C/C	perpendicular + all angles between 90° and 45°
	PVC	3,0 up to 8,2									
	PP	3,0 up to 8,2									
Ø110	PE	3,4	EI 60	flexible walls ≥ 100 mm	π x Ø x	2	2 sides	*	600 x 1200 mm	U/C + C/C	perpendicular + all angles between 90° and 45°

in PA board 2S 50 mm

* smoke seal Acrylic on 2 sides

¹⁾ Penetration services must be supported; support distance ≤ 500mm (wall) or ≤ 400mm (floor).

²⁾ Constructive element must be classified acc. EN 13501-2 for the required fire resistance period. EI for flexible walls ≥ 100mm is also applicable for rigid walls ≥ 100mm!