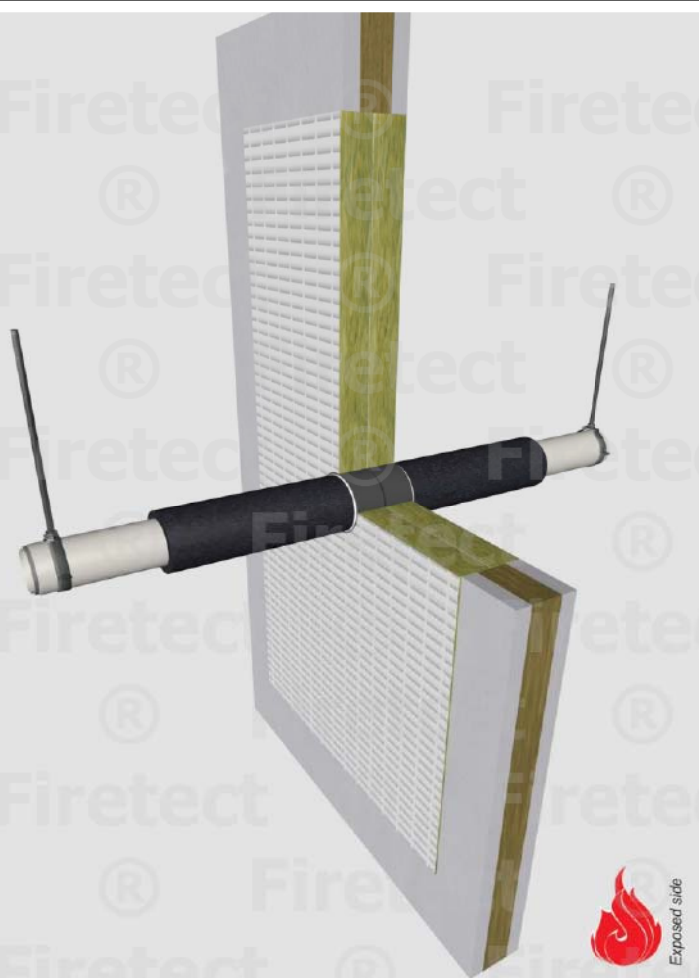


tested property fire resistance
 test method EN 1366-3
 service no. 0266



aluPE-X pipes

service type ¹⁾		pipe insulation min. 60 kg/m ³ eg Armaflex	EI	constructive element ²⁾	Wrap		application	finish required	max. opening in construction	pipe end configuration	max. angle
dØ (mm)	s1 (mm)				Firetect pipe wrap length π x Ø x	no. of layers					
Ø16	2,0	synth. rubber 13mm	EI 60	flexible walls ≥ 100 mm	π x Ø x	2	2 sides	*	600x1200 mm	U/C + C/C	perpendicular + all angles between 90° and 45°
		13mm	EI 60	flexible walls ≥ 100 mm	π x Ø x	2	2 sides	*	600x1200 mm	U/C + C/C	
Ø25	2,5	synth. rubber 13mm	EI 60	flexible walls ≥ 100 mm	π x Ø x	2	2 sides	*	600x1200 mm	U/C + C/C	perpendicular + all angles between 90° and 45°
		13mm	EI 60	flexible walls ≥ 100 mm	π x Ø x	2					
		13mm	EI 90	rigid walls ≥ 100 mm in FR mortar	π x Ø x	1	2 sides	*	200x1000 mm	U/C + C/C	
Ø63	6,0	synth. rubber 13mm	EI 60	flexible walls ≥ 100 mm	π x Ø x	2	2 sides	*	600x1200 mm	U/C + C/C	perpendicular + all angles between 90° and 45°
		13mm	EI 60	flexible walls ≥ 100 mm	π x Ø x	2					
		13mm	EI 90	rigid walls ≥ 100 mm in FR mortar	π x Ø x	1	2 sides	*	200x1000 mm	U/C + C/C	
max.											
Ø75	7,5	synth. rubber 13mm	EI 60	flexible walls ≥ 100 mm	π x Ø x	2	2 sides	*	600x1200 mm	U/C + C/C	perpendicular + all angles between 90° and 45°
		13mm	EI 60	flexible walls ≥ 100 mm	π x Ø x	2					
		13mm	EI 90	rigid walls ≥ 100 mm in FR mortar	π x Ø x	1	2 sides	*	200x1000 mm	U/C + C/C	

in PA board 2S 50 mm

* smoke seal Acrylic on 2 sides

¹⁾ Penetration services must be supported; support distance ≤ 500mm.

²⁾ Constructive element must be classified acc. EN 13501-2 for the required fire resistance period. EI for flexible walls ≥ 100mm is also applicable for rigid walls ≥ 100mm!