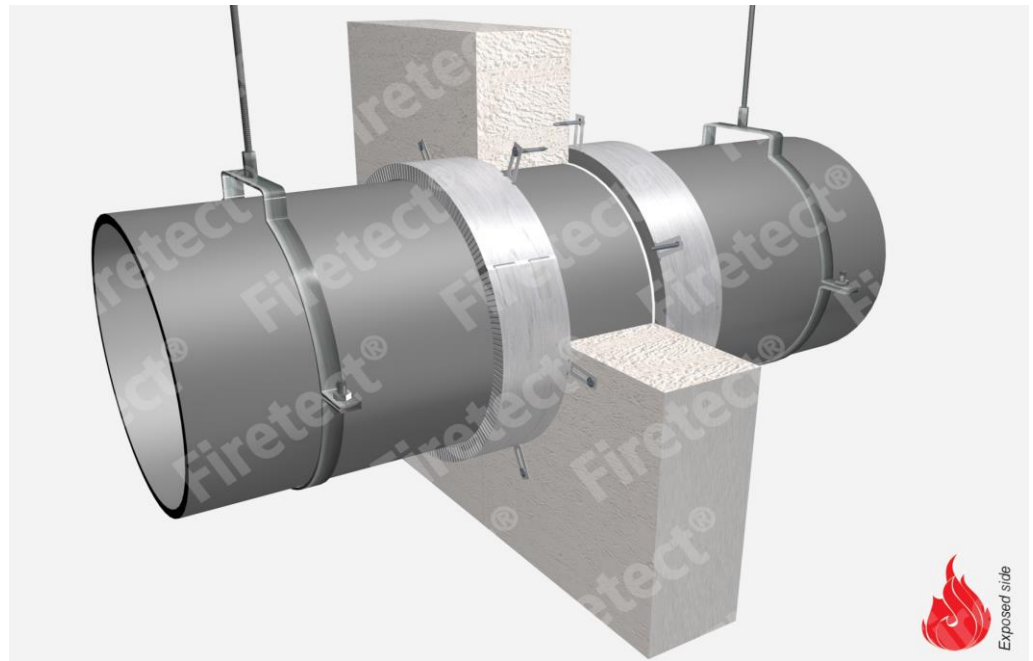


tested property  
test method  
service no.

fire resistance  
EN 1366-3  
0037



## PE + PP + PVC pipes

service type <sup>1)</sup>			non-standard config.	🔥 EI	constructive element <sup>2)</sup>	FMU collar	Firetect pipe collar	application	finish	max. opening	pipe end configuration	max. angle
dØ (mm)		s1 (mm)				Firetect pipe collar	Ø in mm	1 or 2 sides	required	in construction	configuration	
<b>up to</b>												
Ø110	PE	3,4 up to 10,0		EI 60	flexible walls ≥ 100 mm	Firetect pipe collar	Ø110	2 sides	*	110 mm	U/C + C/C + C/C	perpendicular + all angles between 90° and 45°
	PVC	2,7 up to 10,0										
	PP	2,7 up to 6,3										
Ø110	PE	3,4 up to 10,0	screwed on or cast-in with Firetect® PA spirals	EI 60	flexible walls ≥ 100 mm	Firetect pipe collar	Ø110	2 sides	*	600x1500 mm	U/C + C/C + C/C	perpendicular + all angles between 90° and 45°
	PVC	2,7 up to 10,0						2 sides	*	600 x 1200 mm	U/C + C/C + C/C	perpendicular + all angles between 90° and 45°
	PP	2,7 up to 6,3						2 sides	*	264 x 264 mm	U/C + C/C + C/C	perpendicular + all angles between 90° and 45°
Ø125	PE	3,9 up to 11,7		EI 60	flexible walls ≥ 100 mm	Firetect pipe collar	Ø110	2 sides	*	127 mm	U/C + C/C + C/C	perpendicular + all angles between 90° and 45°
	PVC	3,1 up to 11,7										
	PP	3,1 up to 7,1										
Ø140	PE	4,9 up to 14,6		EI 60	flexible walls ≥ 100 mm	Firetect pipe collar	Ø140	2 sides	*	140 mm	U/C + C/C + C/C	perpendicular + all angles between 90° and 45°
	PVC	4,0 up to 14,6										
	PP	4,0 up to 14,6										
Ø160	PE	4,9 up to 14,6		EI 60	flexible walls ≥ 100 mm	Firetect pipe collar	Ø160	2 sides	*	160 mm	U/C + C/C + C/C	perpendicular + all angles between 90° and 45°
	PVC	4,0 up to 14,6										
	PP	4,0 up to 14,6										
Ø200	PE	6,2 up to 18,2		EI 60	flexible walls ≥ 100 mm	Firetect pipe collar	Ø200	2 sides	*	200 mm	U/C + C/C + C/C	perpendicular + all angles between 90° and 45°
	PVC	4,9 up to 18,2										
	PP	4,9 up to 18,2										
<b>max.</b>												
Ø250	PE	9,6 up to 22,7	screwed on with Firetect® PA spirals	EI 60	flexible walls ≥ 100 mm	Firetect pipe collar	Ø250	2 sides	*	400 x 1375 mm	U/C + C/C + C/C	perpendicular + all angles between 90° and 45°
	PVC	6,2 up to 22,7										
	PP	6,2 up to 22,7										
<b>individual test results</b>												
Ø110	PE	3,4		EI 120	flexible walls ≥ 100 mm	Firetect pipe collar	Ø110	2 sides	*	110 mm	U/U + C/U + U/C + C/C + C/C	default: perpendicular + all angles between 90° and 45°
	PP	2,7		EI 120	flexible walls ≥ 100 mm	Firetect pipe collar	Ø110	2 sides	*	110 mm	U/U + C/U + U/C + C/C + C/C	perpendicular + all angles between 90° and 45°
	PE	4,2	max. 15° angle <sup>3)</sup>	EI 120	rigid walls ≥ 100 mm	Firetect pipe collar	Ø125	2 sides	*	115 mm	U/C + C/C + C/C	perpendicular + all angles between 90° and 45°
	PE	4,2	3x bundled	EI 90	rigid walls ≥ 100 mm	Flex collar		2 sides	*	330 x 330 mm	U/C + C/C	perpendicular + all angles between 90° and 45°
Ø125	uPVC	3,7	with pipe socket	EI 90	flexible walls ≥ 100 mm	Firetect pipe collar	Ø125	2 sides	*	125 mm	U/C + C/C	perpendicular + all angles between 90° and 45°
	PP	3,1	screwed on PA board box	EI 90	flexible walls ≥ 100 mm	Firetect pipe collar	Ø125	2 sides	*	125 mm	U/C + C/C	perpendicular + all angles between 90° and 45°
Ø200	PVC	6,0	cast-in	EI 60	rigid walls ≥ 150 mm	Firetect pipe collar	Ø200	2 sides	*	255 mm	U/C + C/C	perpendicular + all angles between 90° and 45°
Ø400	PVC	12,5	XL size	EI 90	rigid walls ≥ 150 mm	Firetect pipe collar	up to Ø400	2 sides	*	405 mm	C/C	perpendicular + all angles between 90° and 45°

in PA board 2S 50 mm

\* smoke seal Acrylic on 2 sides

<sup>1)</sup> Penetration services must be supported; support distance ≤ 500mm.

<sup>2)</sup> Constructive element must be classified acc. EN 13501-2 for the required fire resistance period. EI for flexible walls ≥100mm is also applicable for rigid walls ≥100mm!

<sup>3)</sup> Max. angle: perpendicular + all angles between 90° and 45° + 0° to max. 15°