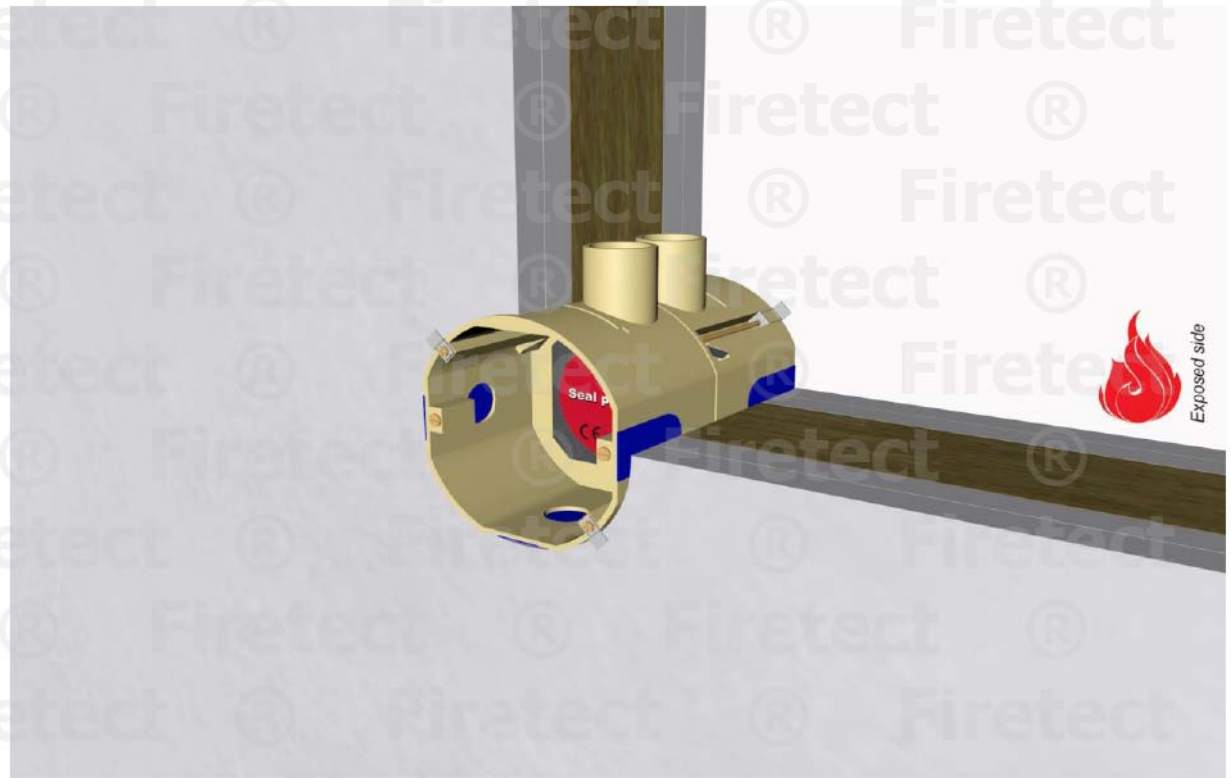


tested property
test method
service no.

fire resistance
EN 1366-3
0002



electrical socket boxes

Seal pad EVO

type	max. size (mm) ¹⁾			acc. EN 1366-3	EI	constructive element ²⁾	Firetect putty pad 1 per module	application		finish required
	width	height	depth					1 side	2 sides	
single socket	76	76	71	☑	EI 60	flexible walls ≥ 100 mm	1 EVO	exposed	-	
	84	90	73		EI 90	flexible walls ≥ 100 mm	1 EVO	exposed	-	
	76	76	50	☑	EI 120	flexible walls ≥ 100 mm	1 EVO	unexposed	-	
	84	90	73		EI 60	flexible walls ≥ 100 mm	1 EVO	unexposed	-	
	76	76	50	☑	EI 120	flexible walls ≥ 100 mm	2x 1 EVO	back-to-back		-
	76	76	50		EI 60	flexible walls ≥ 100 mm	2x 1 EVO		back-to-back	-
	77	77	56	☑	EI 120	rigid walls ≥ 100 mm	1 EVO	exposed	-	
	77	77	56	☑	EI 120	rigid walls ≥ 100 mm	1 EVO	unexposed	-	
	77	77	56	☑	EI 120	rigid walls ≥ 100 mm	2x 1 EVO		back-to-back	-
70	70	55	☑	EI 120	flexible ceilings ≥ 150 mm	1 EVO	exposed	-		
single on row (max. 5x on row)	380	76	71	☑	EI 60	flexible walls ≥ 100 mm	max. 5x 1 EVO	exposed	-	
double socket (2x module)	152	76	50	☑	EI 90	flexible walls ≥ 100 mm	4x 1 EVO		back-to-back	-
				☑	EI 90	rigid walls ≥ 100 mm	4x 1 EVO		back-to-back	-
modular socket (max. 4x module)	284	73	53	☑	EI 60	flexible walls ≥ 100 mm	max. 8x 1 EVO		back-to-back	-
					EI 60	flexible walls ≥ 100 mm	max. 8x 1 EVO		back-to-back	-
				☑	EI 60	rigid walls ≥ 100 mm	max. 8x 1 EVO		back-to-back	-
					EI 60	rigid walls ≥ 100 mm	max. 8x 1 EVO		back-to-back	-

¹⁾ Size is actual size, not mounting size!

²⁾ Constructive element must be classified acc. EN 13501-2 for the required fire resistance period.