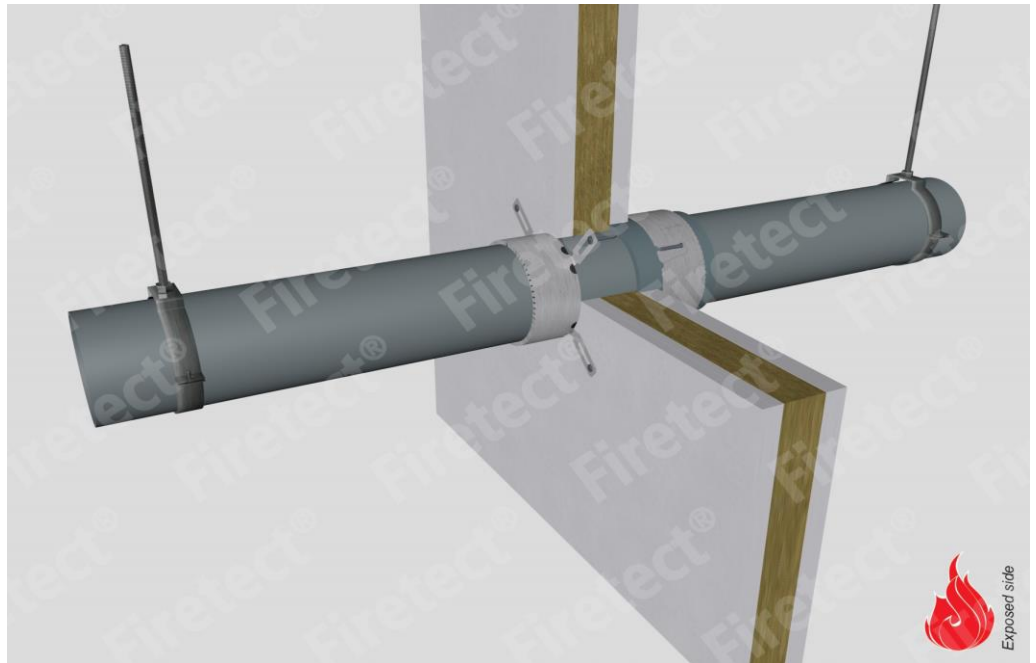


tested property
test method
service no.

fire resistance
EN 1366-3
0001



PE + PP + PVC pipes

FMU collar

dØ (mm)	service type ¹⁾ s1 (mm)	non-standard config.	🔥 EI	constructive element ²⁾	Firetect pipe collar Ø in mm	application 1 or 2 sides	finish required	max. opening in construction	pipe end configuration	max. angle
up to										
Ø110	PE 3,4 up to 10,0 PVC 2,7 up to 10,0 PP 2,7 up to 6,3		EI 60	flexible walls ≥ 100 mm	Ø110	2 sides	*	110 mm	U/C + C/C + C/C	perpendicular + all angles between 90° and 45°
Ø110	PE 3,4 up to 10,0 PVC 2,7 up to 10,0 PP 2,7 up to 6,3	screwed on or cast-in with Firetect® PA spirals	EI 60	flexible walls ≥ 100 mm	Ø110	2 sides 2 sides 2 sides	* * *	600x1500 mm 600 x 1200 mm 264 x 264 mm	U/C + C/C + C/C U/C + C/C + C/C U/C + C/C + C/C	perpendicular + all angles between 90° and 45°
Ø125	PE 3,9 up to 11,7 PVC 3,1 up to 11,7 PP 3,1 up to 7,1		EI 60	flexible walls ≥ 100 mm	Ø110	2 sides	*	127 mm	U/C + C/C + C/C	perpendicular + all angles between 90° and 45°
Ø140	PE 4,9 up to 14,6 PVC 4,0 up to 14,6 PP 4,0 up to 14,6		EI 60	flexible walls ≥ 100 mm	Ø140	2 sides	*	140 mm	U/C + C/C + C/C	perpendicular + all angles between 90° and 45°
Ø160	PE 4,9 up to 14,6 PVC 4,0 up to 14,6 PP 4,0 up to 14,6		EI 60	flexible walls ≥ 100 mm	Ø160	2 sides	*	160 mm	U/C + C/C + C/C	perpendicular + all angles between 90° and 45°
Ø200	PE 6,2 up to 18,2 PVC 4,9 up to 18,2 PP 4,9 up to 18,2		EI 60	flexible walls ≥ 100 mm	Ø200	2 sides	*	200 mm	U/C + C/C + C/C	perpendicular + all angles between 90° and 45°
max.										
Ø250	PE 9,6 up to 22,7 PVC 6,2 up to 22,7 PP 6,2 up to 22,7	screwed on with Firetect® PA spirals	EI 60	flexible walls ≥ 100 mm	Ø250	2 sides	*	400 x 1375 mm	U/C + C/C + C/C	perpendicular + all angles between 90° and 45°
individual test results										
Ø110	PE 3,4		EI 120	flexible walls ≥ 100 mm	Ø110	2 sides	*	110 mm	U/U + C/U + U/C + C/C + C/C	default: perpendicular + all angles between 90° and 45°
	PP 2,7		EI 120	flexible walls ≥ 100 mm	Ø110	2 sides	*	110 mm	U/U + C/U + U/C + C/C + C/C	
	PE 4,2	max. 15° angle ³⁾	EI 120	rigid walls ≥ 100 mm	Ø125	2 sides	*	115 mm	U/C + C/C + C/C	
	PE 4,2	3x bundled	EI 90	rigid walls ≥ 100 mm	Flex collar	2 sides	*	330 x 330 mm	U/C + C/C	
Ø125	uPVC 3,7	with pipe socket	EI 90	flexible walls ≥ 100 mm	Ø125	2 sides	*	125 mm	U/C + C/C	perpendicular + all angles between 90° and 45°
	PP 3,1	screwed on PA board box	EI 90	flexible walls ≥ 100 mm	Ø125	2 sides	*	125 mm	U/C + C/C	perpendicular + all angles between 90° and 45°
Ø200	PVC 6,0	cast-in	EI 60	rigid walls ≥ 150 mm	Ø200	2 sides	*	255 mm	U/C + C/C	perpendicular + all angles between 90° and 45°
Ø400	PVC 12,5	XL size	EI 90	rigid walls ≥ 150 mm	up to Ø400	2 sides	*	405 mm	C/C	perpendicular + all angles between 90° and 45°

in PA board 2S 50 mm

* smokesaal Acrylic on 2 sides

¹⁾ Penetration services must be supported; support distance ≤ 500mm.

²⁾ Constructive element must be classified acc. EN 13501-2 for the required fire resistance period. EI for flexible walls ≥100mm is also applicable for rigid walls ≥100mm!

³⁾ Max. angle: perpendicular + all angles between 90° and 45° + 0° to max. 15°